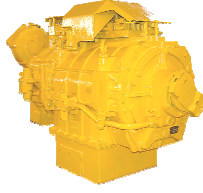


## TRANSMISSIONS



### 1. BEML Transmissions for Dozers

Model	BD31	BD50	BD65	BD80	BD230	BD155	BD355	BD475
Input Power Max. (HP)	66	90	165	180	230	324	416	770
Transmission type	Hydro shift, Constant mesh	Mechanical Sliding mesh	Power shift	Mechanical Constant mesh	Power shift	Power shift	Power shift	Power shift
Speed	3F & 3R	4F & 4R	3F & 3R	5F & 4R	3F & 3R	3F & 3R	4F& 4R	3F & 3R
Control valve	Manual hydraulic	-	Manual hydraulic	-	Manual hydraulic	-	-	Electro hydraulic
Controls	-	-	-	-	-	-	-	-
Coupling								
• Input	Mechanic 5c	Mechanic 6c	Mechanic 5c	Mechanic 8.5c	Mechanic 8.5c	Mechanic 8.5c	Mechanic 9c	Shaft
• Output	Bevel pinion	Shaft	Bevel pinion	Bevel pinion	Bevel pinion	Bevel pinion	Bevel pinion	Shaft
Overall dimn. (l x b x h) (mm)	539 x 422x490	605 x 534 x 854	547 x 624 x 640	640 x 605 x 740	608 x 660 x 865	721 x 654 x 865	839 x 740 x 965	1300 x 820 x 860
Weight max.(kg)	210	300	584	465	860	900	1555	1370

### 2. BEML Transmissions for Dumpers

Model	BH85	BH100
Input Power Max. (HP)	930	983
Transmission type	Automatic Power shift	Automatic Power shift
Speed	7F & 1R	7F & 1R
Control valve	Electro hydraulic	Electro hydraulic
Controls	CTC	CTC
Coupling		
• Input	Mechanic 10c	Mechanic 10c
• Output	Mechanic 12c	Mechanic 12c
Overall dimension (l x b x h) (mm)	1590 x 825 x 1077	1590 x 825 x 1077
Weight max.(kg)	1900	1900

### 3. BEML Transmissions for Motor Graders

Model	BG605	BG825
Input Power Max. (HP)	145	280
Transmission type	Hydro shift, Constant mesh, Planetary	Hydro shift, Constant mesh, Planetary
Speed	6F & 6R	8F & 8R
Control valve	Manual hydraulic	Electro hydraulic Solenoid operated
Controls	-	-
Coupling		
• Input	-	-
• Output	-	-
Overall dimension (l x b x h) (mm)	700 x 602x1185	1077 x 740 x 1340
Weight max.(kg)	780	1090