

## **SRM Software and Settings Instructions**

**Internet Explorer browser only** is to be used for BEML SRM Portal. Please use Internet Explorer Version 11.

Please use **Windows 8 or Windows 10 Operating System**. Windows 7 has become out of support by Microsoft and hence is not recommended. Use of system with Windows 7 operating system may cause some issues for submission of bid on our portal.

In case of Windows 11 Operating System, please use Edge Browser and use 'Reload in Internet Explorer mode' option for the portal.

Following are the software and settings requirement for working on BEML SRM Portal:

- A) Java 32 bit latest version
- B) Microsoft Visual C++ 2010 32 bit
- C) Trusted Site entry for BEML and related settings
- D) Class 3 Organization Digital Signature Token with Signing & Encryption. Related Software for the Digital Signature Token is to be installed in the system.

### **A) Installation of Java 32 bit latest version:**

Note : Even if your system is of 64 bit, please install 32 bit Java version as mentioned below as our portal requires 32 bit Java. In 64 bit system, both 32 bit and 64 bit Java can be installed.

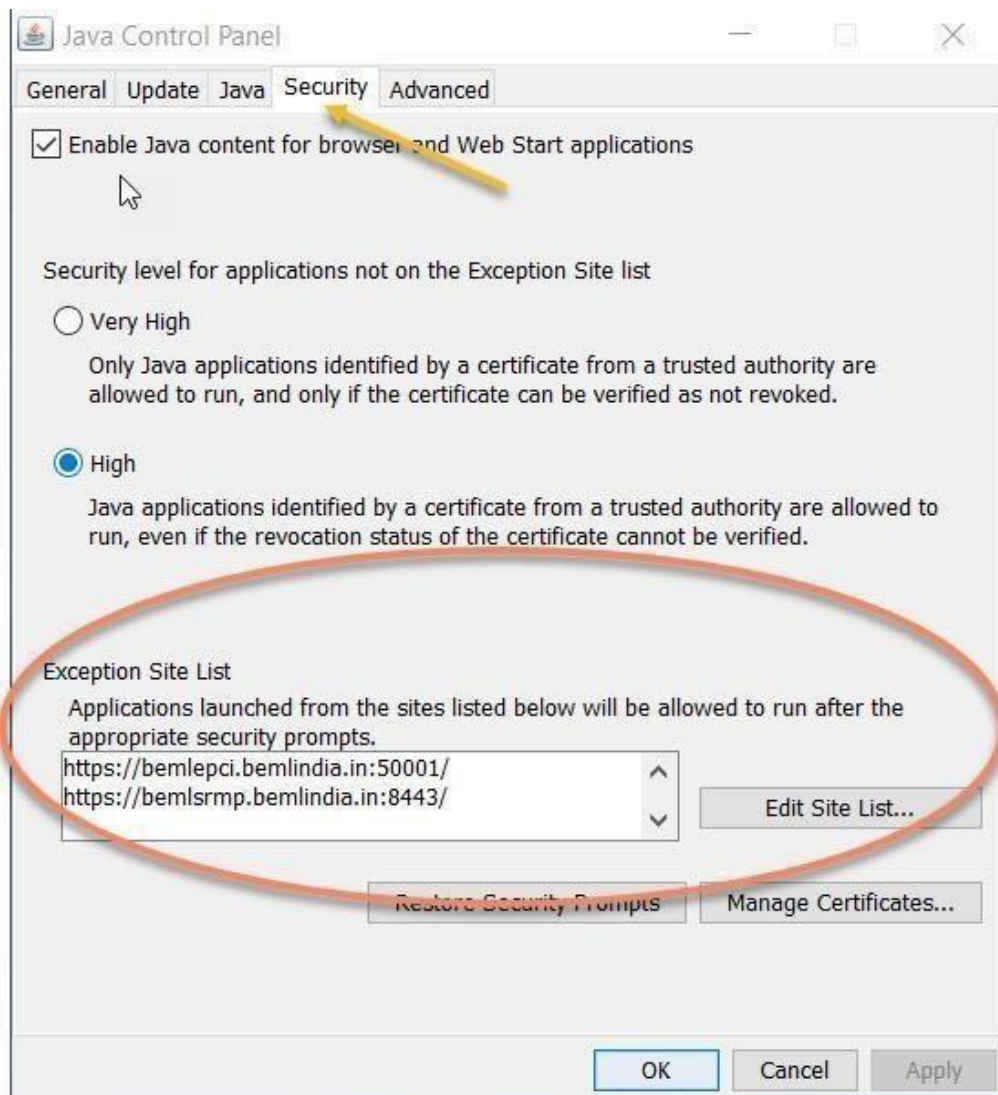
- 1) Open <https://www.bemlindia.in/eprocurement/demo.php>
- 2) Click on 'Download Java' link available on the left side of the page and download the file to your system which contains the latest Java 32 bit version (Java 8 Update 333 32 bit) installation.
- 3) Close all the browser screens and install Java by double clicking on the downloaded file.

:2:

4) Open Java Control Panel. Click on Security tab and click on 'Edit Site List...', Click on 'Add' and add the following two entries:

- i) <https://bemlepci.bemlindia.in:50001/>
- ii) <https://bemlsrmp.bemlindia.in:8443/>

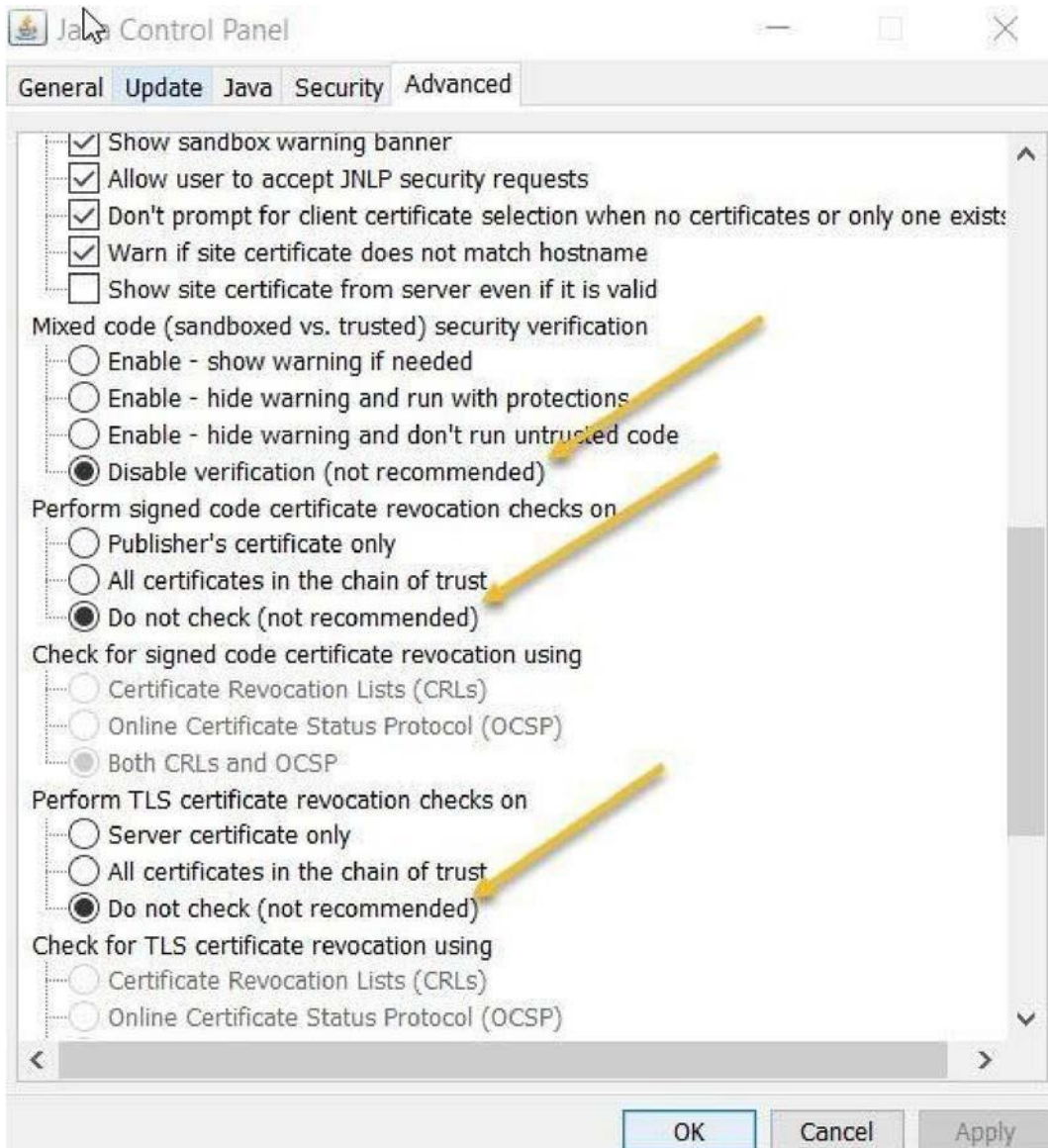
(Java Control Panel can be opened by searching for 'Configure Java' in the search box or by opening Control Panel and then clicking on Java menu)



5) Click on OK

:3:

6) Click on the Advanced tab and select the three parameters as shown below.



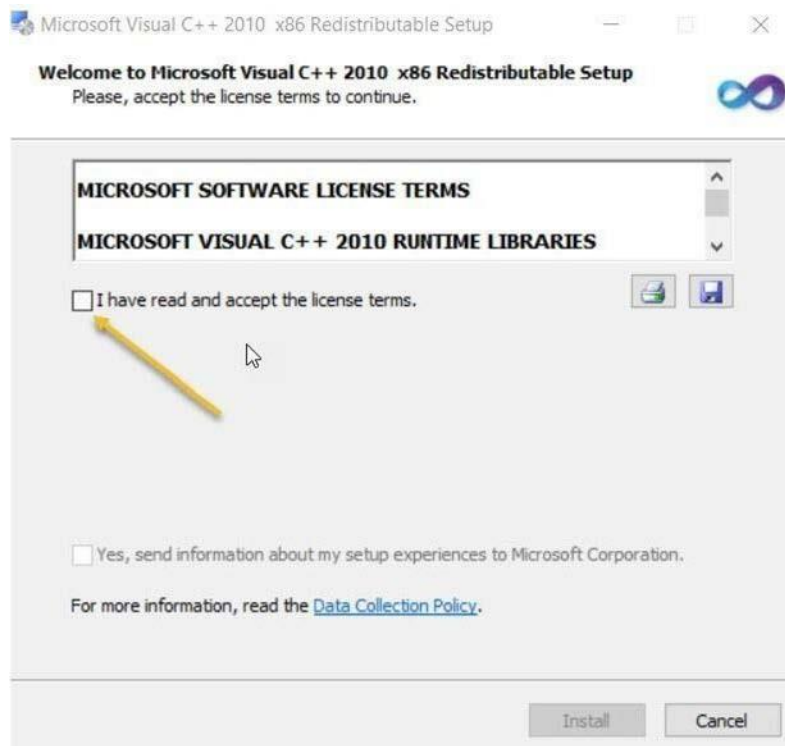
7) Click on OK.

..4..

:4:

**B) Installation of VC++ 2010 32 bit :**

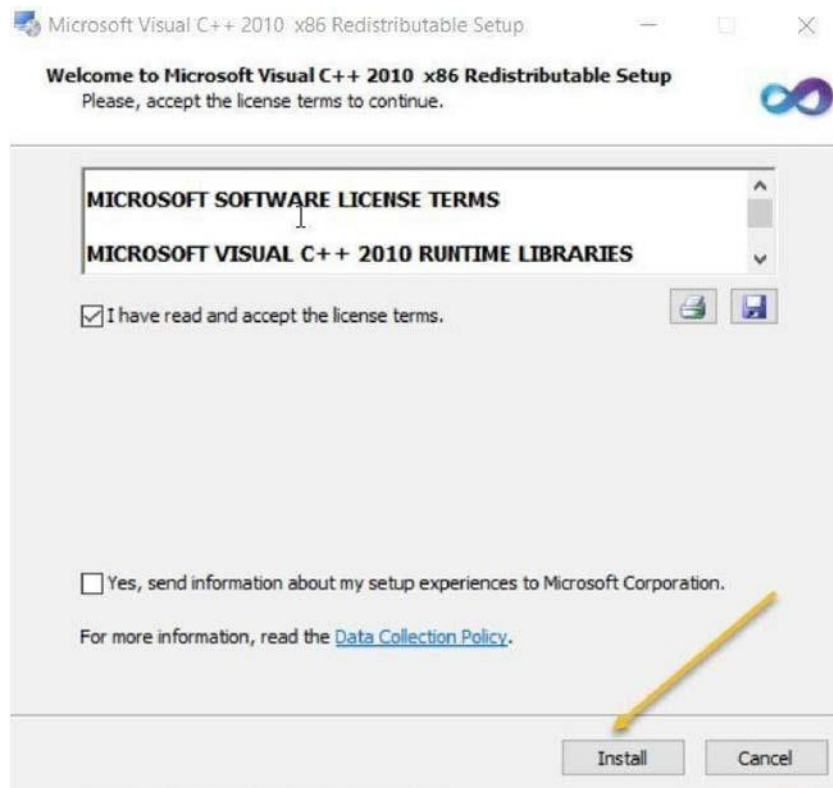
- 1) Open <https://www.bemlindia.in/eprocurement/demo.php> again.
- 2) Click on 'Download VC++ 2010 x86' link available on the left side of the page and download the file to your system which contains Microsoft Visual C++ 2010 32 bit installation.
- 3) Close all open browsers and double click on the downloaded file.
- 4) Installation will start. Put tick mark for I have read and accept the license terms as shown below.



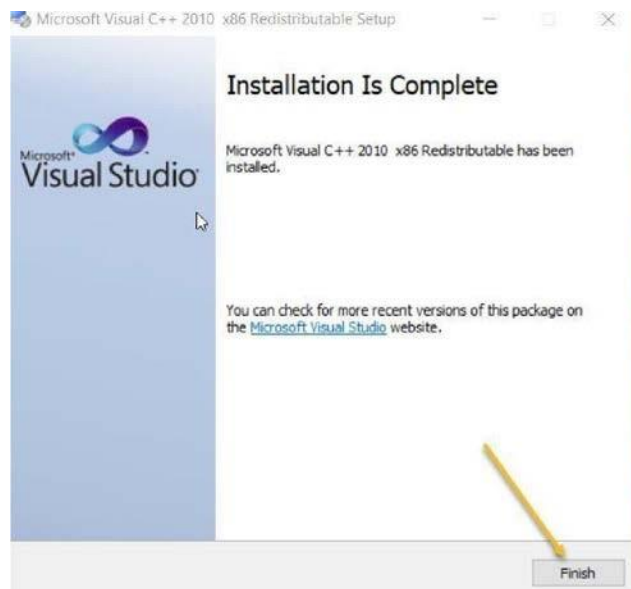
..5..

:5:

5) Click on Install button as shown below.



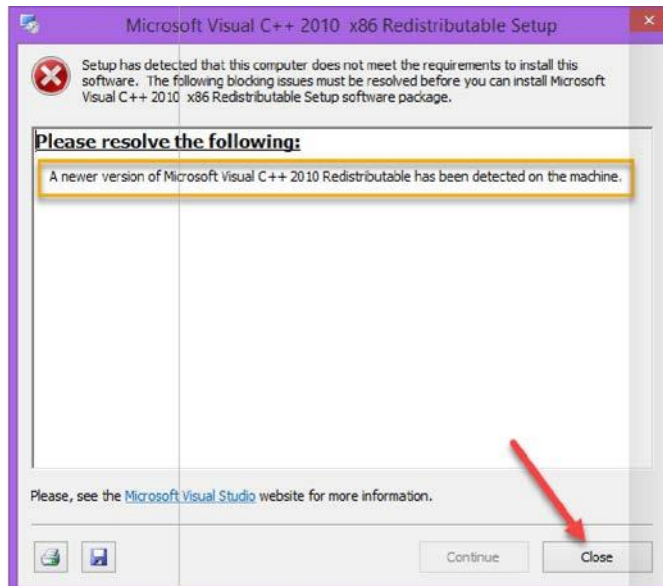
6) Click Finish as shown below.



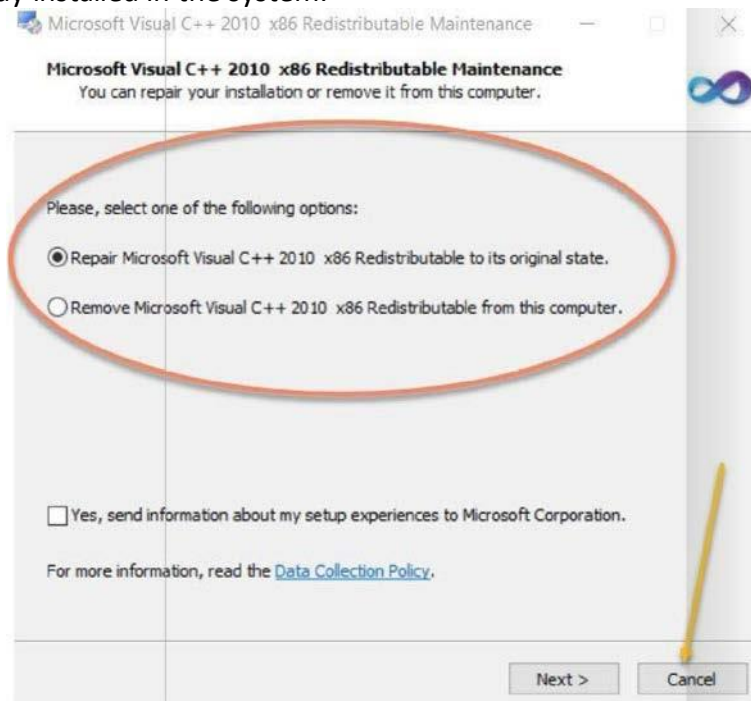
..6..

:6:

- 7) In case you are getting a screen as shown below while installing from the downloaded file, it means you already have this software in your system. In that case, you can click on the Close button to abort the installation.



- 8) You may also get message as shown below If Microsoft Visual C++ 2010 32 bit is already installed in the system.



- 9) Click on Cancel and click on Yes for 'Are you sure you want to cancel?'.

..7..

### C) Trusted Site Entry Settings for Internet Explorer:

- 1) Click on 'Download IE Setup' (link available on the left side of the page <https://www.bemlindia.in/eprocurement/demo.php> and download the batch file to your system. Extract the downloaded file and double click on the same. Press any key on the keyboard to continue.

Trusted Site entry (https://\*.bemlindia.in) is added in Internet Explorer and the required settings for Trusted Sites Zone are made. Screen as shown below is displayed.



```
C:\WINDOWS\system32\cmd.exe
Press any key to continue . . .
Setting Internet Explorer
Turn Off Pop-Up Blocker
The operation completed successfully.
Disabled protected mode
The operation completed successfully.
setting custom level
Allow Scriptlets
The operation completed successfully.
Automatic Prompting for ActiveX controls
The operation completed successfully.
Download signed ActiveX controls
The operation completed successfully.
Download unsigned ActiveX control
The operation completed successfully.
Display mixed content
The operation completed successfully.
Disable Pop-up blocker
The operation completed successfully.
Adding BEML as trusted website
The operation completed successfully.
Press any key to continue . . .
```

- 2) Pressing any key will close the screen.

:8:

#### **D) Digital Signature Token software installation**

Please note that our portal accepts Class 3 Organization Digital Signature with Signing & Encryption only.

Following Digital Signatures cannot be used on the portal:

- i) Class 2 Digital Signatures
- ii) Class 3 Digital Signature Personal or Individual
- iii) Class 3 Organization with Signing only but without Encryption

Please install the appropriate software in your system (if not already installed) based on the type of token you are using. You will be able to find the software in the following:

- i) In the Token
- ii) In the CD provided along with the token
- iii) Online on the site of the issuer of the Digital Signature

Please ensure that the Digital Signature token is plugged into the system before opening Internet Explorer and logging in to the portal.

Please open Internet Explorer in 'Run as Administrator' mode for logging in to our portal. By right clicking on Internet Explorer icon, 'Run as Administrator' will appear.

.....